

**JETTA**

# Installation Instructions

FOR ALL LINES AND MODELS

ADVANTAGE | RAIN SHOWER BASES

CLASSIC | DESIGNER | ELITE

AFFINITY | COSMO | WALK-IN

(800) 288-7771 | [WWW.JETTACORP.COM](http://WWW.JETTACORP.COM)



# TABLE OF CONTENTS

**GENERAL INSTALLATION INSTRUCTIONS** .....2

    RECEIVING: .....2

    OPERATIONAL: .....2

    ELECTRICAL: .....3

    TESTING: .....3

    ROUGH-IN: .....4

**OPTIONAL SKIRT INSTALLATION INSTRUCTIONS** .....5

**SKIRTED TUB INSTALLATION INSTRUCTIONS** .....6

    PREPARATIONS .....6

    ROUGH-IN: .....6

    INSTALLATION STEPS .....6

**FREESTANDING INSTALLATION INSTRUCTIONS** .....8

    ROUGH-IN .....8

    PREPARATIONS .....8

    INSTALLATION OF FREESTANDING BATHTUBS (1-PIECE) AND DRAIN .....9

    INSTALLATION OF FREESTANDING BATHTUB (2-PIECE) .....10

**FREESTANDING AIR OPERATING INSTRUCTIONS** .....11

    KEYPAD CONTROL .....11

        BATH CONTROL INSTALLATION .....12

    INSTALLATION OF FREESTANDING BATHTUB CLAWFOOT .....13

        REQUIRED TOOLS & MATERIALS .....13

        INSTALLATION STEPS .....13

**SHOWER BASE INSTALLATION INSTRUCTIONS** .....14

    PREPERATION .....14

        REQUIRED TOOLS & MATERIALS .....14

    INSTALLATION STEPS .....14

**WALK-IN INSTALLATION INSTRUCTIONS** .....15

    TESTING: .....15

    LEVELING INSTRUCTIONS: .....15

    INSTALLATION INSTRUCTIONS: .....15

    WASTE & VENT SYSTEM .....16

**TROUBLESHOOTING** .....17

## GENERAL INSTALLATION INSTRUCTIONS

### RECEIVING:

Immediately upon receiving your Jetta bath, inspect it thoroughly for freight damage. If damage is found, please note on bill of lading and contact JETTA Corporation immediately. The surface should be protected at all times to prevent scratches.

- Check to ensure the bathtub is the unit you ordered and that its dimensions and drain position correspond to your plans.
- Check color match before installation.
- If there is protective plastic sheet covering the surface of your bathtub, it should not be removed until the installation is complete. When necessary during the installation process the plastic can be peeled back to install the drain, overflow and surface mounted plumbing fixtures. The plastic should also be peeled back in areas where it could become snagged during the installation process.
- Do not carry unit by the piping as this may cause leaks.
- Do not sit on the edge on the edge of the bathtub.
- Nothing should be placed in bath that would scratch or break it.
- Workmen in bath should be in stocking feet only.

## **IMPORTANT: READ AND FOLLOW ALL INSTRUCTIONS PRIOR TO INSTALLATION AND SAVE THESE INSTRUCTIONS FOR FUTURE USE.**

### OPERATIONAL:

1. Do not permit children to use unit unless they are closely supervised at all times. Supervision is also required when the bath is used by an elderly or handicapped individual.
2. Use this unit only for its intended use as described in the Owner's Manual. Only use attachments recommended by the manufacturer.
3. Do not insert any object into any opening. Do not operate electrical appliances while in or within 5 feet of the bath.
4. Do not operate this unit without the guard over the suction fitting. Long hair must be kept away from the suction screen to avoid entrapment. If entrapment occurs, immediately turn unit off.
5. Do not start pump before unit is filled with water 2" above jets – this will void the warranty.
6. Water level should not exceed the lowest edge of the overflow or controls.
7. The water in a whirlpool should not exceed 40°C (104°F). Water temperatures between 38°C (100°F) and 40°C (104°F) are typically considered safe for healthy adults. Prolonged immersion in hot water may produce hyperthermia. The symptoms of hyperthermia include an increase in the internal temperature of the body, dizziness, lethargy, drowsiness and fainting, which can be fatal. Lower temperatures are recommended for extended use (exceeding 10-15 minutes) for young children.
8. Exposure to very hot water has the potential to cause fetal damage during the early months of pregnancy. Pregnant, or possibly pregnant women should limit water temperature to 38°C (100°F). Consult a physician before using.
9. Persons using medication should consult a physician before using a whirlpool. Medications may induce drowsiness, affect heart rate, blood pressure and circulation. The use of alcohol, drugs or medication before or during whirlpool use may lead to unconsciousness with the possibility of drowning.
10. Persons suffering from obesity or with a medical history of heart disease, low or high blood pressure, circulatory system problems, or diabetes should consult a physician before using a whirlpool.

**GENERAL INSTALLATION INSTRUCTIONS****ELECTRICAL**

**WARNING** – WHEN USING ELECTRICAL PRODUCTS, BASIC PRECAUTIONS SHOULD ALWAYS BE FOLLOWED, INCLUDING THE FOLLOWING:

**DANGER: RISK OF ELECTRIC SHOCK.** CONNECT ONLY TO A CIRCUIT PROTECTED BY A GROUND-FAULT CIRCUIT-INTERRUPTER. GROUNDING IS REQUIRED. THE UNIT SHOULD BE INSTALLED BY A QUALIFIED SERVICE REPRESENTATIVE AND GROUNDED. (FOR BUILT-IN AND CUSTOM UNITS) INSTALL TO PERMIT ACCESS FOR SERVICING.

1. This unit must be connected to a supply circuit that is protected by a ground-fault-circuit-interrupter (GFCI). Such a GFCI should be provided by the installer and should be tested on a routine basis. To test the GFCI, push the test button. The GFCI should interrupt power. Push the reset button. Power should be restored. If the GFCI fails to operate in this manner, there is a ground current flowing indicating the possibility of an electric shock. Do not use this unit. Disconnect the unit and have the electrical problem corrected by a qualified service representative before using.
2. Disconnect power before servicing.
3. The motor is supplied with a 30", 14-gauge U.L. approved pigtail. This pigtail is installed at the manufacturers facility and is factory tested and should not be removed or altered under any circumstances. Removal or alteration of this pigtail will void the warranty. The green lead of the pigtail is connected to the ground terminal inside the terminal compartment. To reduce the risk of electric shock, you must ensure that your electric service or supply panel is properly grounded with a continuous green insulated copper wire equivalent in size to the circuit conductors supplying this equipment, but no smaller than No. 12 AWG.
4. A pressure ground connector is provided on the exterior of the terminal box within this unit to permit connection of a No. 8 AWG solid copper bonding conductor between this unit and all other electrical equipment and exposed metal in the vicinity as needed to comply with local requirements.
5. Install to permit access for servicing (for built-in and custom units).
6. Installer / Owner bears all responsibility to comply with all state and local codes when installing this product.

**TESTING:**

Water test your unit prior to installation. Set the tub on a level surface where it can be drained after testing. Insert drain fitting and fill to the overflow. Make sure all fittings, through walls and piping are water tight. While each unit is leak tested at the factory, the process of shipping and handling may loosen joints. If there are leaks, mark the spot(s), drain and repair with GE Silicone Sealer (fiber glass to PVC) or PVC cement (PVC to PVC). Repeat test when dry.

## GENERAL INSTALLATION INSTRUCTIONS

### ROUGH-IN:

Test fit the tub and verify dimensions. Your Jetta bath should be installed in a bedding compound, preferably a mortar mix or thin set, which should be distributed under the base to provide maximum support and even weight distribution. Do not use foam, sand or drywall mud. When leveling, prepare a bed of moist mortar in the area where bath is to be installed. Place equally spaced mounds of bedding compound, about one foot apart, 2" to 4" tall - this should be about the diameter of a three-pound coffee tin (8"-10"). When the bottom of the tub comes in contact with the bedding compound, it should compress the mounds to a 1" to 3" layer while the tub should lightly rest on top of the tub deck. Once the bedding compound dries, all the weight will be carried through the floor of the tub, not suspended by its lip. Carefully level the unit, ensuring that uniform support is given to all areas of the base and that no portion of the lip is bearing weight.

**DO NOT SUPPORT THE WEIGHT OF THE BATH BY THE RIM!** Your Jetta bath has a pre-leveled lip that accounts for the sloped floor towards the drain. **DO NOT REMOVE** the 1" x 1" drain board attached to the bottom of the tub. It is recommended that plastic is laid between the bedding compound and the bath, in case removal of the bath is ever necessary.

If the pump is removed for any reason, use only union connections to reattach. Do not overtighten. Make sure the O-rings on the pump are in place. Hand tighten pump fittings. Do not use a wrench, channel locks, or pipe dope (Teflon paste).

Pump must be located between 1/2" to 1 1/2" above suction fitting. Make sure suction line will drain from pump to bath. A minimum access panel of 14" x 10" must be provided in case the pump or air blower needs to be serviced at a later date.

**IMPORTANT: MANUFACTURER WILL NOT BE LIABLE FOR THE REMOVAL OR RE-INSTALLATION OF THE BATHTUB IF THERE IS A FAILURE TO FOLLOW THE MANUFACTURERS RECOMMENDED PRE-INSTALLATION AND INSTALLATION PROCEDURES, FAILURE TO FOLLOW THE MANUFACTURERS RECOMMENDATIONS COULD RESULT IN THE WARRANTY BEING VOIDED.**

## OPTIONAL SKIRT INSTALLATION INSTRUCTIONS

### OPTIONAL SKIRT:

1. The skirt may need to be trimmed to size. Take the measurements of the skirt opening and compare those of the skirt itself to determine if the skirt must be trimmed to fit. If so, mark the dimensions on the skirt and trim the skirt on the bottom and sides (do not trim the top of the skirt) and cut to within 1/8" of the required dimensions using a circular saw with sharp tooth blade. Using a belt sander is recommended to finish trimming the sides and bottom of the skirt to the exact size of the opening.
2. To create a positive stop for the skirt, nail, glue or screw 2x2" or 2x4" wood blocks on both side walls and along the full length of the front floor section (parallel to tub lip). The wood blocks must be mounted securely against a wall or stud wall framing and the floor.
3. The top of the skirt is notched. Foam blocks are glued to the top backside of the skirt (section that is notched) and will compress to hold the skirt against the bathing well of the tub. Check the underside of the tub lip for smoothness. There may be fiberglass chop that requires sanding, so the skirt will fit snugly in place. Slide the notched top edge of the skirt under the lip of the tub. Move the bottom section of the skirt in place until it is resting against the wood blocks. Verify the vertical edge of the skirt is perpendicular to the floor.
4. Included with the skirt are two screws and decorative caps that cover/conceal the screw head and are color matched to the acrylic. Drill two (2) screw holes in the bottom of the skirt to protect the acrylic from cracking, position to align with wood block. Screw both lower ends of the skirt through the decorative caps, through the acrylic and into the wood blocks to hold the skirt securely in place.

**Note:** the skirt is not marked where the screws should be positioned as application will dictate position.

Installer may then seal the sides and floor with caulk or silicone if so desired.

Parts included for optional skirt installation:

- (1) skirt
- (2) screws
- (2) decorative caps
- (1) instruction sheet

Parts / tools needed for optional skirt installation that are NOT included:

- circular saw with sharp tooth blade and a belt sander
- drill
- 2x2" or 2x4" wood blocks
- caulk or silicone
- screw driver
- tape measure
- square / level

**IMPORTANT: MANUFACTURER WILL NOT BE LIABLE FOR THE REMOVAL OR RE-INSTALLATION OF THE BATHTUB IF THERE IS A FAILURE TO FOLLOW THE MANUFACTURERS RECOMMENDED PRE-INSTALLATION AND INSTALLATION PROCEDURES, FAILURE TO FOLLOW THE MANUFACTURER'S RECOMMENDATIONS COULD RESULT IN THE WARRANTY BEING VOIDED.**

## SKIRTED TUB INSTALLATION INSTRUCTIONS

### PREPARATIONS

Before installing a new Jetta bathtub, we strongly recommend following the installation check list and hiring a certified plumber to handle the installation.

#### REQUIRED TOOLS

- Levels
- Goggles
- Tape Measure
- Caulking Gun
- Conventional woodworking tools and materials
- Drop cloth
- 1/8" Spacers
- Plastic film (optional)

#### REQUIRED MATERIALS

- Silicone bathroom caulking (mildew resistant)
  - Mortar cement
- Visually inspect the bathtub to make sure it has not been damaged during transport. **In case of damage, do not proceed with the installation.**

### ROUGH-IN:

- Make sure the bathtub is the model that you ordered, that its dimensions are correct, and that the location of the drain corresponds to the plans.

### INSTALLATION STEPS

1. Refer to the specification sheet for tub measurements, Construct a plumb alcove out of studs.
2. Install the rough plumbing.
3. Install the drain to the bath.
4. To prevent water absorption, lay plastic film on wooded subfloors. (Optional)
5. To provide support and even weight distribution prepare a bed of moist mortar 1-2" deep in the tub installation area\*. **Do not substitute mortar with expansion foam, sand or drywall mud.**  
*\*If your tub is manufactured with high density foam feet attached to the tub base , the bed of mortar is not required.*
6. Apply a generous amount of construction adhesive to the bath feet or base.
7. Lift the bath into place. Carefully level the unit, ensuring that uniform support is given to all areas of the base and that no portion of the lip is bearing weight.

**DO NOT SUPPORT THE WEIGHT OF THE BATH BY THE RIM! DO NOT REMOVE** the 1" x 1" drain board attached to the bottom of the tub.



## SKIRTED TUB INSTALLATION INSTRUCTIONS

8. Apply the weight evenly to the bath basin until the mortar sets. Once the mortar dries, all the weight will be carried through the floor of the tub, not suspended by its lip.
9. Connect the bath drain to the drain pipe. Position a protective liner in the bath basin.
10. Drill small holes through the flange at the studs. If there are gaps, fill them with a shim.
11. Secure the flange to the studs with galvanized nails or screws.
12. Secure ¼" furring strips to the studs to be flush with the bath flange.
13. Install water-resistant wallboard over the framing.
14. Apply a 1/8" bead of 100% silicone sealant along the seams.
15. Install the finished wall and deck to within 1/16" of the bath rim.
16. Apply 100% silicone sealant around the bath along the finished walls and deck.

**IMPORTANT: MANUFACTURER WILL NOT BE LIABLE FOR THE REMOVAL OR RE-INSTALLATION OF THE BATHTUB IF THERE IS A FAILURE TO FOLLOW THE MANUFACTURERS RECOMMENDED PRE-INSTALLATION AND INSTALLATION PROCEDURES, FAILURE TO FOLLOW THE MANUFACTURERS RECOMMENDATIONS COULD RESULT IN THE WARRANTY BEING VOIDED.**

## FREESTANDING INSTALLATION INSTRUCTIONS

### ROUGH-IN

Test fit the tub and verify dimensions. Carefully level the unit, ensuring that uniform support is given to all the feet and that no portion of the tub shell is bearing weight.

#### SITE PREPARATION:

- The site should be cleared of debris and vacuumed. This will ensure that the bathtub is leveled properly.
- Check if the floor is leveled and solid. The level should be in a range that can be compensated for by the use of adjustable feet. An average sized bathtub can weigh as much as 1000 lbs when full, the floor must be able to support this weight.
- An opening of 6" x 12" should be provided in the floor for the bathtub drain and overflow. Make sure there are no obstructions in this space.
- The plumbing rough-in for both the drain and the supply lines should be completed by a licensed plumber before the bathtub is moved into its final position.

#### PROTECTIVE FOAM PACKAGING:

The adjustable feet are protected with foam packaging around each foot to ensure the quality of the bathtubs during transportation. Remove foam protectors prior to installation.

### PREPARATIONS

Before installing a new Jetta Cosmo bathtub, we strongly recommend following the installation check list and hiring a certified plumber to handle the installation.

#### REQUIRED TOOLS

- Levels
- Goggles
- Tape Measure
- Caulking Gun

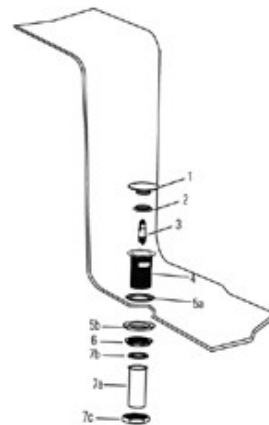
#### REQUIRED MATERIALS

- Silicone bathroom caulking (mildew resistant)
- Visually inspect the bathtub to make sure it has not been damaged during transport. In case of damage, do not proceed with the installation.
- Make sure the bathtub is the model that you ordered, that its dimensions are correct, and that the location of the drain corresponds to the plans.
- To protect the bathtub during installation, cut a piece cardboard from the packaging and place it in the bottom of the bathtub.
- If the bathtub is equipped with adjustable metal legs, they must first be installed by screwing them into the metal opening beneath the bathtub.

## FREESTANDING INSTALLATION INSTRUCTIONS

### INSTALLATION OF FREESTANDING BATHTUBS (1-PIECE) AND DRAIN

1. Temporarily position the bathtub in the desired location, ensuring that the drain hole is aligned to the floor drain and then draw the contour of the bathtub on the ground. If the floor drain is not installed yet, trace its location through the hole of the bathtub, then move the bathtub to a safe place, so as to install floor drain according to guidelines. Reposition the bathtub and ensure that the trace lines are followed.
2. Check the level and adjust if necessary by screwing or unscrewing the feet beneath the bathtub (maximum adjustment of 1 3/4") and ensuring that the bathtub is always resting on all four feet while minimizing the space between the skirt and the floor (the skirt can touch the floor but shall in no way support the weight of the bathtub).
3. Lock the bathtub feet into position by tightening the adjoining nut once an accurate, acceptable level is confirmed.
4. Lay the bathtub on its side, having previously laid cardboard packaging on the ground to protect the surface of the bathtub. Be sure to use a piece of cardboard without staples to avoid damaging the surface of the bathtub.
5. Temporarily install the drain assembly of the bathtub.
6. Place the bathtub back into position on the previously traced outline while ensuring that the drain end fits into the floor drain and is held in place for the next step.
7. Unscrew the rings of the overflow valve and then lift the bathtub and lay it on its side making sure not to move the drain, specifically the floor drain.
8. Tighten the seal ring of the floor drain to the end of the drain.
9. Apply a bead of silicone to the entire circumference of the skirt and the bathtub feet. We also recommend setting a circle of silicone to seal the drain and overflow.
10. Place four pieces of wood 3/4" thick inside the footprint on which to temporarily rest the bathtub.
11. Raise the bathtub and then put it back down again, ensuring alignment over the vertical drain, without moving the drain and making sure the bathtub rests on the wooden blocks.
12. Remove the wooden blocks one by one to correctly place the bathtub in its resting place aligned to the drain.
13. Tighten all drain and overflow connections properly.
14. If necessary, add silicone to the location of the pieces of wood, clean surplus and erase the trace marks on the ground.
15. Leave the bathtub in this position for at least 24 hours before use.
16. Water test the bathtub for leaks.



- 1- Plug
- 2- Cap Seal
- 3- Opening Mechanism
- 4- Strainer
- 5a- Bague putty
- 5b- Seal
- 6- Mounting Nut
- 7a- Drain Pipe (1.5")
- 7b- Gasket
- 7c- Tightening nut

## FREESTANDING INSTALLATION INSTRUCTIONS

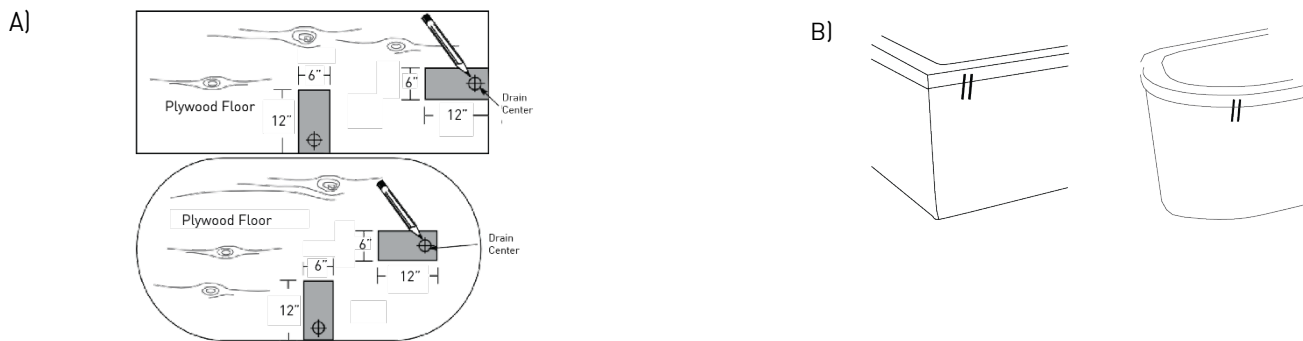
### INSTALLATION OF FREESTANDING BATHTUB (2-PIECE)

For a bathtub with a contour skirt, we suggest that you follow the instructions below. It is recommended that the installation be done by two people.

The bathtub has been leveled in factory. If an adjustment is necessary, you can use the adjustable feet by loosening the locknut on each foot, but they must be relocked in position before the final installation.

1. Temporarily position the entire bathtub in the desired location. If the drain is not preinstalled, mark its location on the floor so that you can reposition the bathtub correctly in the following steps (Figure A). Using a washable marker, draw two lines from the edge of the bathtub to the skirt (Figure B) to establish a reference point for Step 5.

An opening of 6" x 12" inches needs to be cut into the floor for the bathtub drain and overflow (see figure below). Make sure that there are no obstructions in this space.



2. Remove only the bathtub, being careful to not move the skirt. Next, draw the interior outline of the skirt on the floor with a lead pencil to designate skirt location. (Figure 7)
3. Remove the skirt and reposition only the bathtub according to the previously drawn lines.
4. Apply a thin line of silicone under the skirt and put it into place.
5. Position the bathtub, integrate the bathtub into the skirt. Make sure that the two reference lines drawn are well aligned.

Note: The bathtub must rest on its feet and skirt. The feet should be in contact with the floor and the skirt with the edge of the bath at all times.

6. Leave the bathtub in this position for at least 24 hours.

#### NOTES:

We recommend the two following methods for future service access:

- A) Cut an access panel in the floor under the bathtub if circumstances allow.
- B) Remove the bathtub from the skirt if required for maintenance.

The structure of this style of bathtub is not designed to sit on the edge, the acrylic skirt and the tub itself may crack. A tape with foam can be installed between the skirt and the tub to avoid squeaking noise.

# FREESTANDING INSTALLATION INSTRUCTIONS

## FREESTANDING AIR OPERATING INSTRUCTIONS

### KEYPAD CONTROL

#### 2 BUTTON AIR BATH CONTROLLER



#### INITIAL POWER CONNECTION

Upon initial connection to power, the LEDs flash as the bath control goes through a self-diagnostic check. Once the LEDs stop flashing, you may use the control.

#### AIR BLOWER ON/OFF

If the blower is off, press the Blower button once to turn the blower On. Blower will start at the highest speed. If the blower is On, press the Blower button once to turn the blower Off.

#### MODES (BEGIN WITH BLOWER TURNED OFF)

Quickly press the Blower button twice to put the Blower into Pulse mode or Press the Blower button three times to put the Blower into Wave mode.

#### INCREASE/REDUCE BLOWER SPEED

Press and hold the up or down arrow button to increase or decrease the speed smoothly.

#### PURGE CYCLE

The Purge Cycle removes water from the plumbing and dries the air delivery system. This helps to maintain a sanitary bathing environment.

The Purge Cycle begins 20 minutes after the air blower is turned off.

The Session Timer LED flashes periodically to indicate that a Purge Cycle will soon begin.

Certain actions may cancel the planned Purge Cycle. This is normal. Otherwise, after 20 minutes, the 2-minute Purge Cycle will begin.

When the Purge Cycle ends, all equipment turns off automatically.

#### HEATED QUIET-FLO BLOWER

Anytime the blower turns on, the heater turns on with it.

#### SYSTEM ERROR DETECTION

If an error occurs in the bath system, the red ERROR LED will flash.

In addition, the three remaining LEDs stay lit in a specific on/off pattern that reveals a diagnostic code of the error. If this occurs, take note of which of the three lights are on or off. This information will help technical support in diagnosing the error.

## FREESTANDING AIR OPERATING INSTRUCTIONS

### SYSTEM RESET

Unplug blower for 10 seconds to restart the system. Plug back in and allow initialization cycle to run.

### BATH CONTROL INSTALLATION - UNPLUG BLOWER FROM POWER OUTLET

When installing or changing a control panel, unplug the blower from the wall outlet to remove source power. Install the power cord into the wall only after all connections have been made, which include: bath control panel and cables, LED light and cables, and the water detect cable (if equipped).



### WARNINGS

- Choose a location for the blower with the shortest possible distance from the bath, no more than 15 ft and a maximum of six directional changes to ensure system performance. It can be under the floor, in a closet or any other place that can hide the blower
- A service access is necessary. Minimum dimensions are 22in x 18in to properly reach all electrical components of the system.
- An air vent is necessary. Minimum dimensions are: 2" x 4" to ensure proper functioning of the blower.

### REMOTE MOUNTING OF AIR BLOWER

1. The installer must determine the layout of the piping; exact remote mount location, and a service access before beginning any work. Use 1.5" ABS or PVC plastic tubing. Locate the blower in an area accessible for servicing.
  - a. NOTE: a 15ft extension hose can be purchased from your plumbing supplier. To ensure proper suctioning of the system, avoid remote mounting in a location which requires more than six (6) piping direction changes. A 90 degree direction change should be made up of two 45 degree elbows for maximum efficiency.
2. Install the blower in the remote location. The remote mount location ambient air temperature should remain at approximately 72 degree F for optimum air heating.
3. The blower should be attached firmly to the floor.
4. Attach one end of the blower hose to the bath connection.
  - a. WARNING: When routing cables, do not allow the cable to be pinched.
5. During installation, if it is preferred to run the blower hose on top of the floor, a 2 1/2" diameter hole can be drilled at the bottom of the skirt. A means to cover the hole, hose, and wires is not provided.
6. Return to the bath installation section to finish installation of the freestanding bath.
7. Once the tub is installed, attach the remaining end of the hose to the blower.
8. Plug keypad cable into the back of the blower. Use the 10 foot cable extension provided to reach 15 feet.
9. Plug the blower into the power source.
10. **If components are run behind a wall, the system must be fully tested before closing up the wall.**

**MANUFACTURE IS NOT RESPONSIBLE FOR CREATING ACCESS OR REPAIRS TO SHEETROCK IF THERE IS A FAILURE TO FOLLOW THE MANUFACTURER'S RECOMMENDED INSTALLATION PROCEDURES.**

## FREESTANDING INSTALLATION INSTRUCTIONS

### INSTALLATION OF FREESTANDING BATHTUB CLAWFOOT

READ ALL OF THE INSTRUCTIONS BELOW AND FOLLOW ALL LOCAL PLUMBING AND BUILDING CODES.

Unpack and inspect the clawfoot attachments for any shipping damages and ensure no pieces are missing.

If any damages are discovered, DO NOT INSTALL.

Before installing, we suggest having a blanket or soft surface to avoid scratches while the tub is turned upside down while attaching the feet.

#### REQUIRED TOOLS & MATERIALS

- (1) Long Bracket
- (2) Short Brackets
- (4) Bolts
- (10) Nuts
- (10) Washers
- 17mm & 19mm Sockets
- Socket Wrench

**NOTE:** STEPS 1-5 ARE STPS TO BE TAKEN FOR THE BRACKETS CLOSEST TO THE DRAIN. STEPS 6-10 ARE FOR THE SINGLE BRACKET ON THE BACK END OF THE TUB. STEPS 11-14 INCLUDE THE INSTALLATION OF THE CLAWFOOT ONCE THE BRACKETS HAVE BEEN ADDED.

#### INSTALLATION STEPS

1. While the tub is upside down, take off the plastic caps at each foot location covering screw threads. There will be 1 washer and 1 nut underneath the plastic caps. Take each of these off.
2. Place the 2 small brackets down so that the screws are protruding from the 2 elongated holes in each bracket and center them evenly.
3. By hand, thread 1 of each washer and nut down onto all 4 bolt threads.
4. Taking one of the clawfeet, line the threaded hole in the bracket up with the hole on the back of the leg and ensure that it will fit properly. The bracket can be adjusted slightly if needed.
5. When you've made sure the bracket is in the proper position for the installation, tighten down both nuts with a 17mm socket.
6. While the tub is upside down, take off the plastic caps at each foot location covering screw threads. There will be 1 washer and 1 nut underneath the plastic caps.
7. Place the long bracket down so that two screws are protruding from the 2 elongated holes in the bracket and center the bracket evenly.
8. Thread the washer and nut down on both ends of the bracket, but only hand tighten these for now.
9. Taking one of the clawfeet, line the threaded hole in the bracket up with the hole on the back leg and ensure that it will fit properly. The bracket can be adjusted slightly if needed. *Repeat for opposite leg.*
10. When you've made sure the bracket is in the proper position for the installation, tighten down both nuts with a 17mm socket.
11. Supplied is a washer and bolt for each leg. Place 1 large washer on a nut, this will be needed in later steps.
12. To attach the clawfoot, place it on the tub and line the threaded hole on the bracket to the elongated hole on the back of the clawfoot.
13. Take the nut with a washer on it that was prepared in the steps previously and hand tighten the leg down. *(Be sure the leg fits properly and is level before continuing)*
14. Once the leg is positioned and leveled for installation, tighten the bolt down with a 19mm socket.

#### REPEAT STEPS 11-14 FOR EACH REMAINING CLAWFOOT

**NOTE:** EACH LEG HAS AN ADJUSTABLE LEVELERA 17MM SOCKET IS REQUIRED TO MAKE ADJUSTMENTS.



# SHOWER BASE INSTALLATION INSTRUCTIONS

## PREPERATION

READ ALL OF THE INSTRUCTIONS BELOW AND FOLLOW ALL LOCAL PLUMBING AND BUILDING CODES. Unpack and inspect the shower base for any shipping damages and ensure no pieces are missing. If any damages are discovered, DO NOT INSTALL.

### REQUIRED TOOLS & MATERIALS

- Safety glasses
- Drill
- Screwdriver
- Paper and pencil
- Tape measure
- Level
- Hammer
- Pipe wrench
- Set square
- Drill bit
- Silicone sealant (mildew resistant)
- Construction glue
- Shims (cedar shingles)

Ensure plumbing rough-in for both the drain and the supply lines are completed according to your shower base's dimensions.

The floor area where your shower will be installed must be structurally sound and strong enough to hold the shower base and an adult's weight. Also make sure that the walls and floor are square, plumb, and level. If need by, level the floor with floor leveler.

Sweep the floor to remove construction debris and vacuum to remove all remaining dust.

If renovating, remove all existing wall material in order to install shower base directly on wall studs.

Ensure that the wood frame has the appropriate dimensions.

If you plan on installing a door, you will also need to plan studs to receive the fastener screws when installing the jams. Please refer to the installation guide provided with the door.

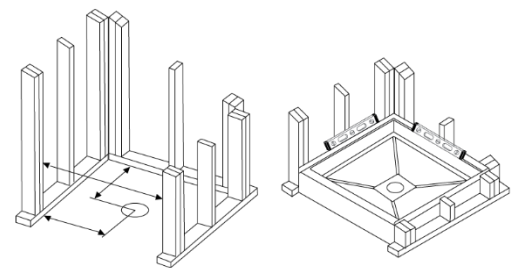
All plumbing rough-in for both the drain and the supply should be completed before installing the shower base.

## INSTALLATION STEPS

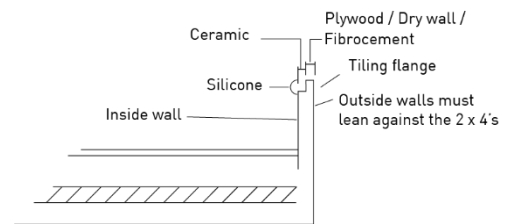
Ensure walls and floor are square, plumb and level and that the waste pipes are well positioned. Position the unit in the prepared location and adjust level with wood shims or mortar. It will be easier to adjust the tray if you have access to it from the outside of the formwork. Before proceeding to the final installation, verify drainage by pouring water in the shower base.

Tray with tiling flange on 3 sides and corner tray

The sides with tiling flange must lean against the 2 x 4s. (see fig)



Ceramic tiles must be flush with the base's interior walls, the walls must be perfectly square and the tray perfectly level in order to be able to adjust the doors correctly. (see fig)



### IMPORTANT!

Note that to install all basic shower models, the sides and feet of the base must be properly supported. It is strongly recommended that you rest the base on a mortar bed, make a structure to support the center (drain) of the base, and level the floor using a floor leveler.



## WALK-IN INSTALLATION INSTRUCTIONS

### TESTING:

Water test your unit prior to installation. Set the tub on a level surface where it can be drained after testing. Fill to the overflow. Make sure all fittings, through walls and piping are water tight. While each unit is checked at the factory, the process of shipping or improper handling may have loosened the joints. If there are leaks, mark the spot(s), drain and repair with GE Silicone Sealer (fiber glass to PVC) or PVC cement (PVC to PVC). Repeat test when dry.

The air switch must be located on or near bath, with access available. Check to ensure that the air hose is plugged into the switch that is located at the back of the rectangular box on top of the motor. For additional safety, a ground-fault circuit-interrupter must be added.

Faucets may be installed through the wall or mounted on the bath. Insert drain and overflow to waste line. After installation, fill the bath and let stand 3 - 4 hours (operating it for at least 30 minutes) to double check that it is still water tight. Inspect tub completely (around pump and or blower, all plumbing fittings and doors for leaks) any defect must be reported prior to installation in order to have it covered under warranty.

Check to ensure that your installation will conform to all applicable codes and secure necessary permits. All electrical and plumbing connections should be made by qualified electricians and plumbers.

### LEVELING INSTRUCTIONS:

1. Feet are extended for shipping purposes to provide clearance and protection of the front skirt. The tub must be reset to proper installation height by installer.
2. Raise the two center feet so that tub rests only on the four corner feet.
3. Raise the corner feet to lower tub to desired height and level tub in both directions.
4. After the tub has been water tested and all plumbing connections are made up, verify tub level and lock the four corner feet in position.
5. Lower the two center feet so they firmly contact the floor and tighten in place.

### **SYSTEM TEST: AFTER INSTALLATION MAKE SURE ALL PLUMBING CONNECTIONS AND HYDRO MASSAGE AND AIR MASSAGE SYSTEM CONNECTIONS ARE CORRECTLY INSTALLED, RUN THE FOLLOWING TESTS:**

1. Before filling the tub with water, be sure to remove all loose debris from tub. Wipe down the door seal using a damp cloth, as well as the surface in the door jamb that will come in contact with the door seal.
2. Fill the tub to the overflow and check for leaks. Check by hand where visual verification is not possible.
3. Turn the pump and or blower on and let run for at least 30 minutes. Check for leaks while the system/systems are running and again after you turn them off. Check by hand where visual verification is not possible.

### INSTALLATION INSTRUCTIONS:

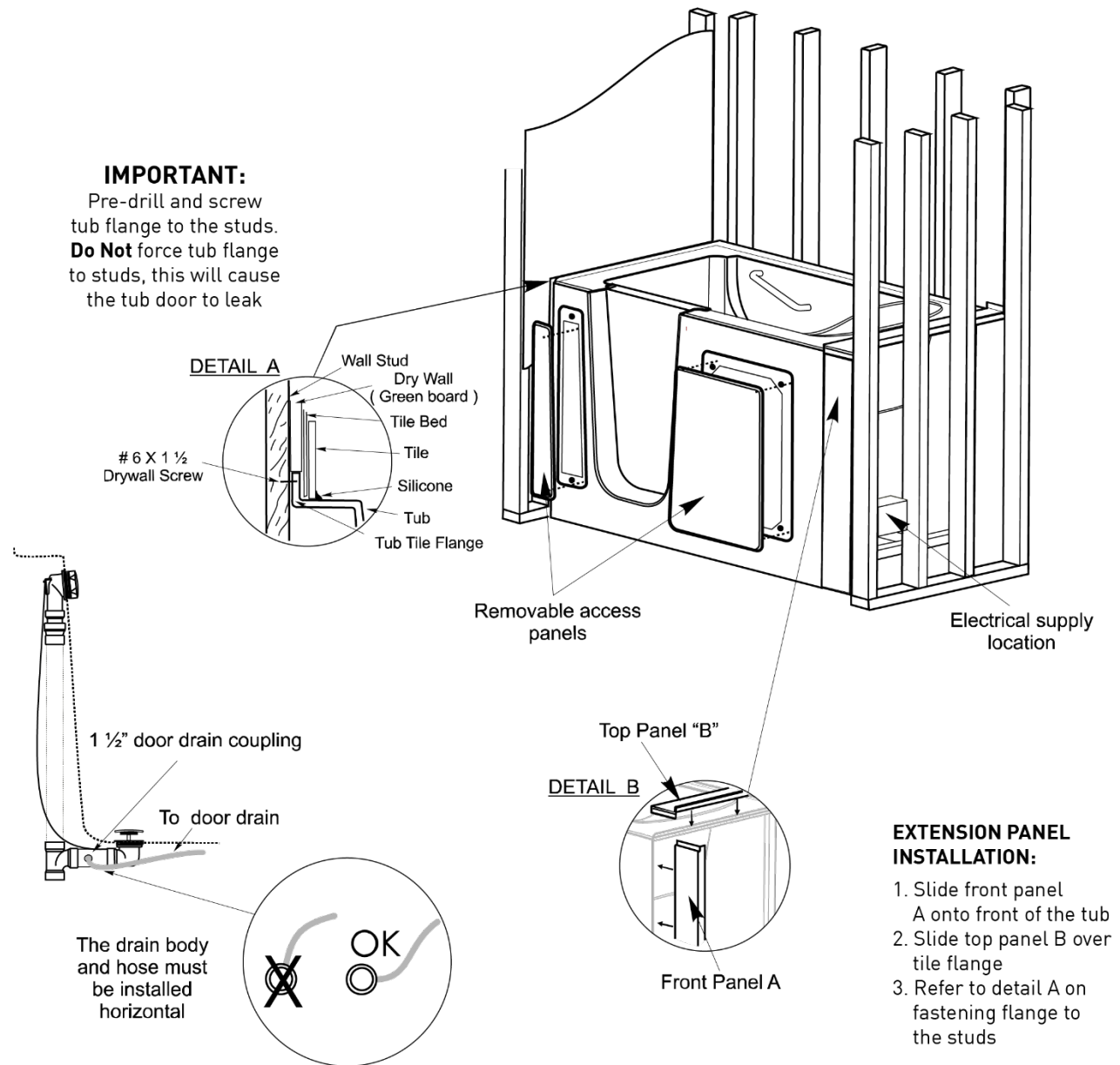
1. Bathtub must be set on a solid flat surface and leveled in both directions. (All six (6) adjustable feet must come in contact with the floor). Bathtub MUST be leveled using a 2' - 0" level both ways on the top deck of the Bathtub only.
2. Plumbing hardware (fill valve, hoses, and reverse drain) should be installed prior to setting tub in-place.
3. Use union connections only for the pump. Do not overtighten. Make sure the O-rings on the pump are in place. Hand tighten pump fittings. Do not use a wrench, channel locks, or pipe dope (Teflon paste).

WALK-IN INSTALLATION INSTRUCTIONS

4. The Filler / Extension panel(s) are used to extend the overall Bathtub to 60".
5. The Door Drain fitting (precut to fit) is to be installed between the drain shoe and the Waste & Overflow tee-or- in reverse drain application, between the waste and overflow piping.

WASTE & VENT SYSTEM

For optimum drain performance, it is recommended to replace the trap arm and vent tee with a 2" x 1 1/2" x 2" vent tee and a 2" trap arm with a 2" 'P' trap and 1 1/2" bushing. If this is not possible, replace the existing 1 1/2" trap arm and 'P' trap. If neither of the above options is possible, it is critical to 'Roto Rooter' or snake out the 'P' Trap and trap arm for at least 10'-0" from the 'P' trap.



## TROUBLESHOOTING

### **Why will my jet motor not turn on or off?**

The GFCI could be tripped. Confirm that the receptacle is working by plugging in a hairdryer or light. If the receptacle is operational, check to ensure that the red tubing is attached firmly to the bottom of the On/Off switch button body as well as to the back of the motor. The On/Off button is operated by a puff of air traveling down this line.

### **Why is the same amount of water not coming out of all of my jets?**

All Elite, Designer, Classic and Walk-In tubs have jets with adjustable water volume control to provide specific intensity to each area of the body. The intensity can be controlled by turning the jet to the right for increased water flow or to the left for decreased water flow. Please note that our Advantage and Affinity lines do not have adjustable water volume jets.

### **Can I adjust the whirl pattern coming from the jets on the back of my tub?**

Jetta Designer and Elite baths come standard with rotational jets at the back of the tub. These jets are designed to disperse water in a whirl pattern. To reduce the whirl pattern, use your finger to adjust the center of the jet nozzle to the center of the jet body. To increase the whirl pattern, move the jet nozzle to the outer ring of the jet body. Please note that our Classic, Walk-In, Advantage and Affinity lines do not have rotational jets.

### **Why does the water flow not increase through the jets even though I am adjusting them?**

There could be debris caught in the jet. The jet body on our Classic, Designer, Elite and Walk-In tubs can be removed by rotating to the left until the tabs clear the openings. When reinstalling the jet, insert the tabs into the openings and turn to the right until you hear the jet click into place. Please note that the jets on our Affinity and Advantage lines are unable to be adjusted and/or removed for cleaning.

### **Can I remove my jets for cleaning?**

The jets in Jetta's Classic, Designer, and Elite tubs can be removed and placed in the dishwasher for cleaning. To remove the jets, turn the outer ring counter clockwise past the point of resistance until you hear a click. Pull the jet straight out to remove. To reinstall the jet, insert the jet body into the housing and turn to the right until you hear a click.

### **Can I use Epsom or bath salts, bubble bath or bath oils in my tub?**

We do not recommend using salts with the whirlpool or air feature as the salt crystals may get stuck in the jets, air holes, plumbing lines or pump. Additionally, the acrylic may discolor due to use of bath salts.

We recommend using only bubble bath that is water soluble with the soaker hydrotherapy only so as not to leave a residue in the plumbing or air lines of your tub. We do not recommend using bubble bath or any oil-based bath products while your whirlpool or air system is in use.

### **Why will my air blower not turn on?**

The GFCI could be tripped. Confirm that the receptacle is working by plugging in a hairdryer or light. If the outlet is operational, unplug the blower from the GFCI outlet under your tub. Ensure that the black cable is securely fastened to the back of the keypad as well as the back side of the blower. The black cable needs to be plugged into the far right opening as you are facing the back of the blower. Look into the plug on the cable and confirm there are no bent pins inside the plug. Plug the blower back into the GFCI outlet. Reset the keypad by pressing and holding the top two buttons simultaneously for 10 seconds. If the reset was successful, all of the lights on the keypad should be off after the initialization sequence concludes.

### **How do I adjust the speed of the bubbles on my air tub?**

The speed adjustment is located on your keypad. Press and hold the + or – keys to increase or decrease the speed of the bubbles.

### **Why is my air blower not running at an even speed?**

Jetta air tubs come standard with three modes. Pressing the blower button on your keypad once will give you Continuous Mode. Pressing the blower button twice will give you Pulse Mode. Pressing the blower button three times will give you Wave Mode.

### **Why does my air blower turn on after I am out of the bath?**

Jetta air tubs come equipped with an automatic purge or dry cycle. This keeps the injector lines clean and dry. The cycle is initiated automatically 20 minutes after use and has a cycle time of 2 minutes.

### **Should I run the purge cycle even if I do not use the air blower?**

Yes. Jetta recommends that you turn the blower on then back off to set the purge cycle to ensure that the lines stay clean and dry.

### **What should I do if the light in my air tub will not turn on?**

The light on air or combo tubs is operated by the keypad. Check to ensure that the gray cable coming from the back of the light cup is plugged into the middle outlet on the back of the blower.

**If unit is within the limited factory warranty, contact Jetta Corporation at (800) 288-7771 with your purchasing information on hand so we may serve you better.**

**Visit [WWW.JETTACORP.COM/FAQs](http://WWW.JETTACORP.COM/FAQs) for additional troubleshooting tips.**

425 Centennial Blvd  
Edmond, OK 73013

**LOCAL** (405) 340-6661  
**TOLL FREE** (405) 340-6661  
SALES@JETTACORP.COM



[WWW.JETTACORP.COM](http://WWW.JETTACORP.COM)